



Newsletter No. 241

February/March 2020



**Out with
the old
and
in with the
new.**

**Happy New
Year**



Top: Wallington Commercials, June 1970. © Bob Gray. Above: First new AD E20D MMC. © David Etheridge.

In this edition:

**Golden Jubille quiz night ~ Finding My Routes ~ Alexandra Motor Coaches Ltd ~ LT Museum
Acton Depot ~ Buses & Model Railways - Part 12 ~ Michael Dryhurst Provincial ~ Disposals at
Wallington Commercials**

~ Plus the latest fleet news.



Happy New Year and welcome to the new decade.

I tend not to feel comfortable at this time of year, personally I have no desire to look back, make resolutions or get involved in the false bonhomie. However, as age speeds up the years, a decade seems over in a flash and it does make you think about events in the last ten years.

As a club we came through the decade in good shape - maintaining membership levels, evolving the monthly meetings, moving the news sheet to colour and increasing content. What of the wider bus and coach industry in our area? In ten years you would expect to see significant change but, on the surface, very little seems different from 2010, but look closer and you see subtle changes. Bluestar has continued to expand and invest heavily in new vehicles, benefiting the population of Southampton after suffering many years of poor service and under-investment from the competition. Stagecoach maintained its presence, neither expanding nor contracting although in recent times it has started to win Hampshire County Council contracts again, a knack it lost mid-decade. Portsmouth and Winchester saw investment in new vehicles and some rebranding, but overall Stagecoach nationally now seems lacklustre and the image dated, even 'Gold' has lost its shine. First Hampshire appear to have a schizophrenic management style: some new investment, occasional route branding, attempted intensive networks and misguided competition - much of it short lived. As years passed, other ideas were tried with most falling by the wayside and their decade ends much as it began.

Smaller operators had mixed fortunes. Eassons retired, selling up to Coliseum who promptly sold out to Locketts who in turn became the largest independent in the area. Vision Travel didn't have any, otherwise they might have seen the VOSA coming, whilst Black Velvet gave it a go without success. Sadly Brijan fell apart whilst in the same area Wheelers continued to expand, although their major expansion into bus services has proved short lived. Xelabus came along and its fortunes have ebbed and flowed but is planning a tenth anniversary celebration in 2020. Emsworth & District almost made it through the decade but sadly appeared to fall foul of the Traffic Commissioner, whilst Portsmouth City Coaches became the new force in that area.

Overall the SOC area has provided enough interest to keep the enthusiast entertained in the last decade but will the new decade do the same? With the exception of Go-Ahead and perhaps National Express Group, all the major groups appear to have lost impetus whilst stakeholders take their profits and dividends. Smaller operators continue to be entangled in ever increasing bureaucracy which is hindering their ability to compete despite the cost of finance remaining at an all time low.

So, who will be around in 2030? A speculative subject to vote on at the next meeting perhaps, results remaining sealed until the January 2030 meeting. Packet of chocolate digestives to the winner!

Committee. Chairman: Roger Watts, Secretary: James Woodcock, Treasurer: David Etheridge.

Please Note: The Solent Omnibus Newssheet contains facts, views, opinions, statements and other content and links to external websites not controlled by the Solent Omnibus Club. The Club takes reasonable efforts to include accurate, current information but makes no warranties or representations as to the accuracy, value or safety of the published items. No liability or responsibility can be taken for errors or omissions.

Under the Data Protection Act 1984 the SOC gives notice that membership details are held on computerised records. This information is not divulged without permission.



Club News & Diary



Meetings

The December meeting is covered in detail on page 4. Congratulations to our friends from Portsmouth City Coaches on becoming 2019 quiz champions.



K777 MJE (YJ03 PSY) DAF SB4000/Van Hool C48Ft, new to Eavesway. © Barry T.

In January we welcomed our friends from SADTHT for a members evening entitled 'Southampton'. David Hutchings and his members opened the evening with a presentation featuring the vehicles in their care and looking at the outreach work they undertake in the wider community. Their efforts bring history and bus preservation to a wider audience and hopefully encourage new enthusiasts. The evening continued with SOC member's presentations looking at various aspects of bus and coach operators in the city. It was also a pleasure to welcome back the triumphant 2019 quiz winners from Portsmouth City Coaches.



Former
Southampton
Atlantean TTR
167H in Eastleigh.
© Barry T.

2020 Diary

7.45pm at Portchester

7th February.

AGM and Photographic competition.

6th March.

Members evening ~ Portsmouth.

3rd April.

Members evening ~Coaches and coach rallies.

10th August

Invitation to a summer barbecue with S&DTHT at Bursledon Brickworks Museum at 1830h.

This space is available to advertise non-SOC bus and coach events.

The John Bulman collection

Emsworth & District.



Golden Jubilee birthday quiz night ~ The December meeting.



We enjoyed not one but two special cakes made for the club by Roger Watts youngest step-daughter, Sophie and very moreish they were. Marion Watts ably assisted by Linda Elkin very kindly preformed catering duties on top of their contributions to the winning teams.

The club welcomed guest from MDOG, S&DTHT, FoKAB and Portsmouth City Coaches along with two SOC teams to a celebratory team quiz night.

With tea and mince pies on the tables the teams settled down to tackled questions such as chassis numbers; body types; operator addresses and overseas locations. We also managed our version of the BBC quiz 'Only Connect'.

After 100 questions the participants enjoyed a cup of tea and a slice of birthday cake before getting down to the answers. The winners of each section receiving a chocolate reward whilst the 3rd, 2nd and 1st places all received small prizes.

Third place went to S&DTHT, second place went to 'Class Act' an SOC team made up of Roger Watts, Marion Watts, Roy Jetten and Chris Drew. The winners by two points were Portsmouth City Coaches, Michael Elkin, Chris Elkin, Linda Elkin and Nigel Selmes.

The evening was a fine way to start Christmas and end our golden jubilee year.



17th April 1953

Hants and Sussex Motor Services, Ltd., and associated companies have signed an agreement with the Transport and General Workers' Union.

Finding my Routes

ASDA free bus service. Chris Drew



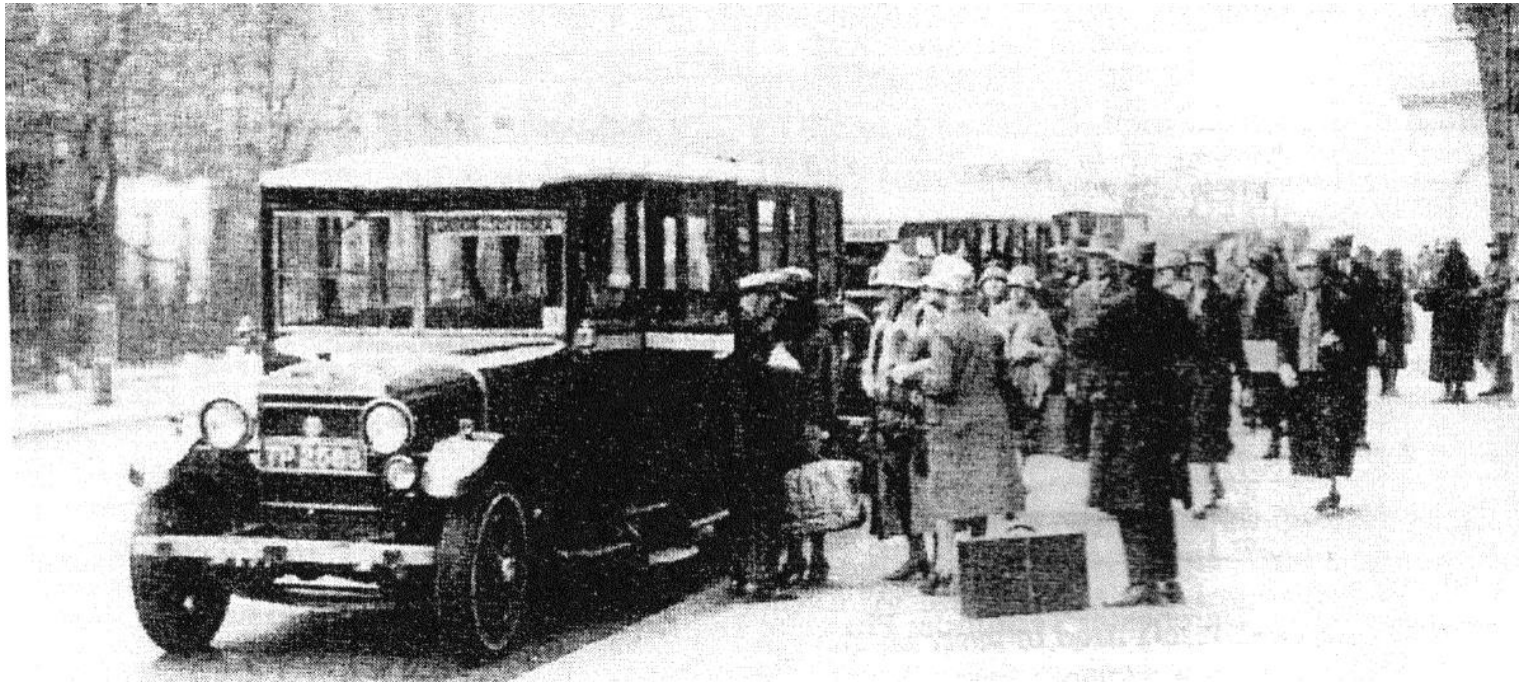
I chose this route not because it's a route to get me from A-B, more it's a chance to ride on a good cross section of the Xelabus fleet. I stopped counting how many different types after a baker's dozen, a small sample is attached. The route its self is quite tightly timed with a round journey from and back to Fareham bus station taking exactly an hour....maybe. It leaves the bus station on the hour from 9am until midday. It travels to ASDA Fareham, hence the name, then on via Peel Common, Stubbington then to the High Street in Lee on the Solent. The way back is routed along Fell Drive, Nimrod Drive and Rowallan Avenue to Peel Common and then on to ASDA again and finishing back at Fareham Bus Station. There are worse ways to spend an otherwise unoccupied hour.

I found a fun way of taking shots was to catch one in Stubbington at about 20 minutes past the hour, get off at Peel Common and walk the route back and take the photographs where our paths crossed again, in theory about an hour later. That way it's easy to keep track of late running. There were quite some distances between various shots, on one occasion about half an hour behind where it should have been or the time taken to walk from Lee to Stubbington.

Variation in buses used meant I did get a chance to ride on an Olympian in May 2018 and the Wright's hybrid demonstrator in August. Dare I say that, this was the bus that was 30 minutes behind its allotted time. On a good percentage of my trips, I was the only passenger, which would meant a poor return for ASDA's finance department but on the other side of the coin, I did get a choice of any seat I wanted.



ALEXANDRA MOTOR COACHES LTD., SOUTHSEA. Roger Watts



TP 2588 operating the Southsea to London express. The vehicle was later operated by Frank Thorne, Cerne Abbas.

Alexandra was founded by Mr. Percy Oliver by Easter 1922, with a new 14-seat FIAT, and reputedly pioneered the Southsea to London coach service. The business was named after Alexandra Rivers, whom he married in 1923. He used a very dark all-over livery described variously as chocolate, maroon or purple with gold lettering. Originally based at Castle Road, the head office was moved to Old Bridge Buildings, Highland Road, Southsea, (which property was later acquired by Southdown), in November 1926. 1926 was also the year that Alexandra started to standardise on Reo vehicles, TP 2588, photographed in Buckingham Palace Road, Victoria, being the first. Bodies were supplied by Arnold & Comben (of Farnham) and Phoenix Coachwork Ltd (of London EC4). Alexandra tried two Giflords with Phoenix Coachwork bodies (TP 7915/6) in 1928, before buying TSM C60A7 chassis fitted with Harrington C32R coachwork in 1932. The coaches were originally garaged at Haig's in Granada Road, on the site of the former Southsea Railway Station, but garaging and servicing later transferred to Clarendon Road, the premises of Messrs. Rourke and Loader (later bought out by Wadham Brothers). Alexandra came to be regarded as an "up market" concern, which operated extended tours, day tours and private hire, in addition to the London service, which had five departures each way every day. Disaster struck in 1935 when the firm's accountant absconded with the company funds and Percy Oliver was forced to sell up. The goodwill and operating licences went to Southdown, the date of assignment being 23rd May 1935. No vehicles were included, these being sold separately mainly to other Hampshire operators. The company itself was put into voluntary liquidation in June 1935.

Another of the Alexandra fleet to end up in Dorset was TP 4921 with C Fripp, Okeford Fitzpaine.

30 YEARS AGO (First published in news sheet No.6 Nov/Dec 1978)

In Nov/Dec 1948, H&D received HRU 451-5 L6Bs with Dutfield C30F bodies, which were not licensed until 4/49. They also had HLJ21-31, K6As with L55R bodies, but only saw HLJ 21-4, since HLJ 25-31 were delivered to LTE in 12/48. There were no rebuilds of any note, nor any withdraws, during these two months. How simple the chassis codes were in those days – K6A instead of VRT-SL3 6LXB! CORRECTION –to 4/18 – the rebuilt K5G was 9359 not JT 9360.

"Wet but not a washout" - LT Museum Acton Depot open weekend, 22/23 September 2018. Adrian Willats was there...



RTW467 seen from upstairs on FRM1, which appears in the other picture ready for another tour of the "delights" of Acton!

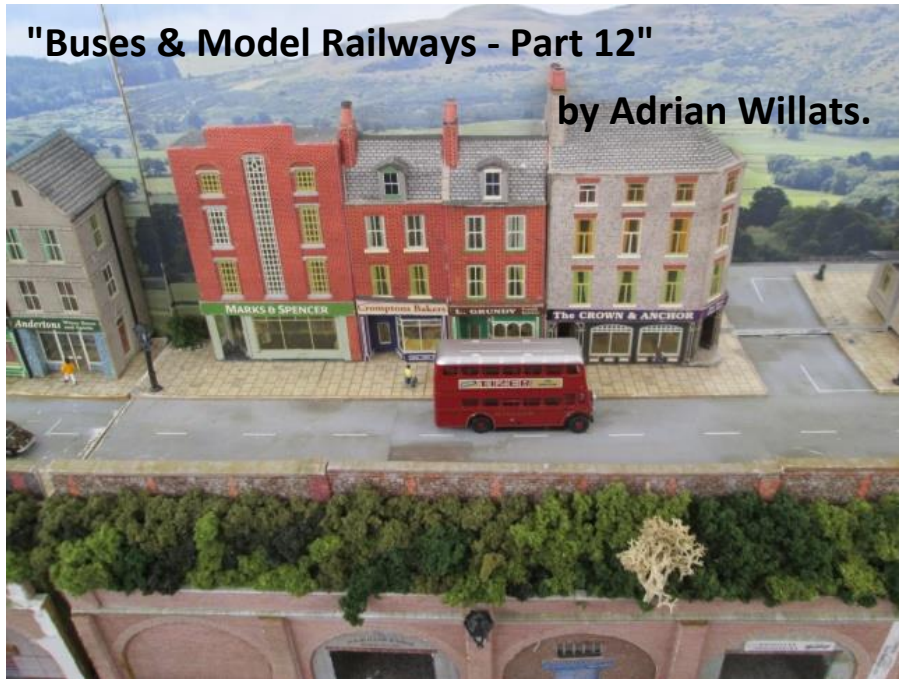
To be fair, it wasn't actually raining when I boarded the 09.18 train from Petersfield on the Saturday, but by the time I left a District Line train at Acton Town a little after 11.00 a steady drizzle had appeared. Not that this seemed to deter the numbers of people attending - I thought that I probably saw almost as many visitors as when I had attended an open event in April this year - when the warm, sunny was the complete opposite weather-wise! I was pleased to 'bag' £25 worth of bargain books from the Museum Friends' shop - contributing my small bit to an apparently very successful weekend for them. I had a ride on the newly-reopened miniature railway, braving the by then heavier rain to do so along with many others of all ages. More in keeping with SOC subject matter was my one bus ride, which was on the unique rear-engined Routemaster, FRM1 (KGY 4D). I suspect that on my trip at least, every one of its 72 seats was occupied - it was, after all, twenty minutes or so away from the crowds inside the depot whilst keeping (temporarily) dry into the bargain! Two buses were running, the other being RTW467 (LLU 957). The LT Museum Friends website says that 1,423 people were carried over the two days - not bad for a wet weekend!

A wet "battle bus" and an upstairs interior of FRM1. All seats taken!



"Buses & Model Railways - Part 12"

by Adrian Willats.



For this article, I am grateful to exhibitors at the 6th annual show of the Pevensy Bay Model railway Club, held on 21 July 2018. A small show by floor area, but one with a big, friendly welcome from both organisers and club members.

Many of the layouts, including those shown in these first four photos, were in N-gauge, so the buses (and trains!) are quite small to photograph! By keeping the image size smaller here, I can give a 'flavour' of the buses and scenery without image quality suffering too much from enlargement!





Two of the real buses seen on the day.

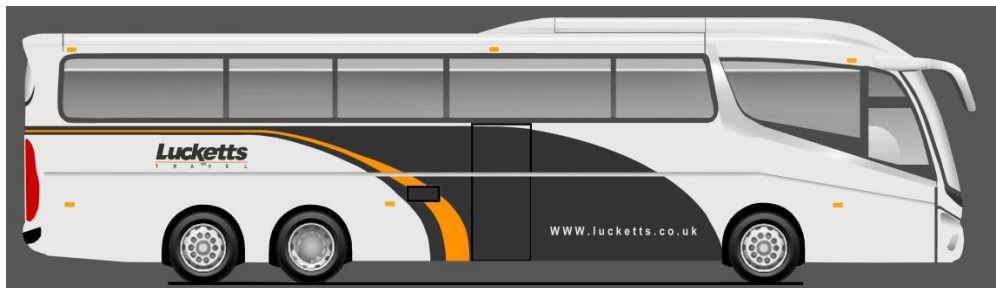


Chris Drew writes:

While in communication with **Michael Dryhurst** he has sent some photos of Provincial buses that he took in the early to mid 50s which he thought the SOC would be interested in.

FT 4222, AEC Regent, chassis number 0661587, delivered new to Tynemouth & District in 1937 with Weymann (M1225) H26/26F body. Re-bodied in 1949 by Pickering to H30/26R. Acquired by Provincial in 1957.

Operator News



Aldershot & District.

A little out of our area but of some interest. East Hampshire District Council are considering a planning application from The Aldershot & District Rescue and Restoration Society for a museum in Hawthorn Lane, Four Marks.

Go Ahead

PH1121126 New operating centre, Brockenhurst College for eight vehicles. Christmas 2019 operations; Christmas Eve, full Saturday service ran on all routes, except for 6, 35, 36, T3/T4, which had a weekday service. Extra morning journeys on routes 5, 9 and 12. Christmas Day, special timetable on routes 1X (Southampton-Eastleigh-Winchester) and 18 (extended to General Hospital and Lordshill) only. No service on other routes. Boxing Day full Sunday service on all routes except for the 6, which did not run.

Go Ahead Unilink

The U2C route has reverted to its original way back to the City, Bancroft halls having been bought, refurbished, and re-opened under private ownership as Greenwood Court. There was some lobbying from residents to get it reinstated but the most use is from the students. The short workings from the Mayflower Halls to the Glen Eyre Halls remains as the U2. The U1A/U1C service is now much better, thanks to the U1W short workings having been extended from the Wessex Halls to the Airport. (Duncan Egerton)

Hants & Dorset

Buses Worldwide reports DEL 891C, Bristol FLF6B (229.085), ECW (14788) H38/32F new in 1965 as 1521, is in Vienna parked outside the Museum of Art in a new livery for Babylon Night Club now minus the drivers cab door.

Wheeler's

BJ69 WTL Volvo B11R, MCV eVoTor C53F, new September 2019. (Bob Gray).

Cancellations of Existing Services, PH1011572/24(Salisbury, Endless Street and Andover Bus Station)No. 87/88; PH1011572/28 (Broadway, Winchester and High Street, Broughton) No.16; PH1011572/14 (Stockbridge High Street and Andover Bus Station) No. 15; PH1011572/15 (Andover Rail Station and Smanell Road, Augusta Park Andover) No. 14, all from 5th January 2020.



Portsmouth City Coaches (as at 1/1/20). Information supplied by Michael Elkin.

Registration	Previous Registration	Original Registration	Chassis	Chassis No.	Body	Body No.	Seating	New
P2 DFC	VIL 6190	P2 DFC	Volvo B10M-62	YV31M2B10TA045188	Jonckheere	24248	C51Ft	Sep-96
K777 MJE		YJ03 PSY	DAF SB4000	XMGDE40XS0H010353	Van Hool	37040	C48Ft	Mar-03
K777 SSE		OU59 AVE	Van Hool TD927	YE2927SD358D53435	Van Hool	53435	CH63/24Ft	Sep-09
N77 EAE		BK11 CRU	Setra S416GT-HD	WKK63213423111509	Setra		C52Ft	Apr-11
N77 RJE		BK11 CRX	Setra S416GT-HD	WKK63213423111525	Setra		C52Ft	Apr-11
N777 SSE		YJ11 AMX	Bova FHD127.365	XL9AA38RB34003935	Bova		C53Ft	Apr-11
N777 MJE	P15 PCL	WA62 BBF	VDL FHD127.365	XL9AA38RC35003228	Bova		C53Ft	Oct-12
N77 PCC		YN64 AGX	Scania K360EB4	YS2K4X20001891225	Irizar	141826	C53Ft	Oct-14
M300 ELK	ESU 912	FD02 SDY	Scania CN94UB	YS4N4X20001842511	Scania		B42F	Jul-02
M600 ELK		YN53 CFJ	Scania N94UD	YS2N4X20001845810	East Lancs	C46114	H51/39F	Oct-03
M700 ELK		YN53 CFO	Scania N94UD	YS2N4X20001845577	East Lancs	C46102	H51/39F	Oct-03
LJ04 LFK			VDL DE02PSDB250	XMGDE02PS02PS0H011496	Wright	H071	H43/27F	Jul-04
M800 ELK		YN55 NGU	Scania N94UD	YS02N4X2001851634	East Lancs	C54225	H51/39F	Sep-05
M900 ELK		YN55 NGV	Scania N94UD	YS02N4X2001851635	East Lancs	C54226	H51/39F	Sep-05
YJ55 KZX			VDL DE02PSDB250	XMGDE02CS02CS0H011100	Wright	J400	B44F	Oct-05
M555 ELK		MX56 NLN	AD Enviro 200	SFD321AR16GY10163	AD	6227/8	B38F	Jan-07
SF57 JSY	MRZ 6931	SF57 JSY	Mercedes 616D	WDB9056132R64054	Koch		B25F	Sep-07
SP57 CNK			Scania K270UB6	YS2K6X20001858279	Scania	412778	DP56F	Sep-07



Road Works in Hart Plain Avenue, Waterlooville.

Hart Plain Avenue was closed to traffic from 0930 to 1630 from Monday 21/10/19 to Friday 25/10/19 and from Monday 28/10/19 to Friday 1/11/19 for resurfacing. Bus services were affected as follows.
 39 (HAVANT – WECOCK FARM) Diverted from Hambledon Road via Milton Road and Eagle Avenue to the bus terminus.
 39 (WECOCK FARM – HAVANT) Diverted from bus terminus via Eagle Avenue and Milton Road to Hambledon Road.

Kevin Kitcher

Christmas workings

Christmas Eve

Stagecoach Portsmouth, Saturday service with early finish, except for route 38, which had a weekday service with early finish.

Stagecoach Winchester, Saturday service with early finish, except for routes 46 and 461, which had a weekday service.
 Christmas Day & Boxing day, no service.

27th

Stagecoach Portsmouth, Saturday service, except for route 38, which had a weekday service.

Stagecoach Winchester, Saturday service, except for routes 46 and 461, which had a weekday service.

Service Registrations

PH0005857/282 Winchester to Houghton from 06 January 2020, Mon-Sat service Hampshire CC tender.

PH0005857/284 Winchester to East Stratton from 03 January 2020, shoppers service, two trips on two days a week.

Reserve Fleet

34629, 35259/60 at Winchester. 34518 at Chichester .

Fleet Movements

Enviro 300 27648 on loan from Chichester to Worthing.
 Tridents 18504/13 at Winchester.

Sold Vehicles

Dart SLFs 34417, 34519/31, 34608/30/34/37 and 34858.

Allocations

Chichester

Trident 18502. Volvo B7TL 16931 16932. ADL E40D/Enviro 400 10001 10008 10009 19097 19098 19881 19882 19883

19884 19885 19886 19887 19900. ADL Enviro 400MMC 11272 11273. Dart SLF 35122. ADL Dart/Enviro 200 36014 36015 36016 36017 36018 36019. ADL E20D/Enviro 200 36823 36824 36918 36919 36920 37269 37274.
ADL Enviro 300 27556 27569 27570 27649 27650 27651 27652 27653 27654 27661 27662 27663 27741 27742 27836
ADL E30D/E300 (Gold) 27837 27838 27839 27840 27841 27842 27843. Optare Solo Slimline 47645 47646 47648.
Optare Solo 47586 47587. Optare Solo SR 47932 47933
Reserve Fleet Volvo B7TL 16933 16935, Dart SLF 34518 35121 35127.

Portsmouth

Trident 17740 18514 18516 18517 18518 18523.

Trident 2/Enviro 400 19034 19039 19055 19063 19071 19077 19078 19090. Scania/Enviro 400 15987 15988 15989 15990 15991 15992 15993. ADL E20D/Enviro 200 36825 36826 36827 36828 36829 36830 36831 36832 36925 37276 37277 37278 37279. Dart SLF 35117 35118
ADL E200MMC 11.8m 26146 26147 26148 26149 26150 26151 26152 26153 26154 26155 26156 26157 26158 26159 26160 26161 26162 26163 26164 26165. ADL Enviro 300 27557 27655. ADL E30D/Enviro 300 27861 27862 27863 27864 27865 27866 27867 27868 27869 27870 27871 27872 27873 27874 27875 27876 27877 27878.

Reserve Fleet Dart SLF 34415.

Winchester

Trident 18078 18118 18310 18504 18512 18513 18520 18521. Trident 2/Enviro 400 19099 19158 19159 19160 19161 19162 19163 19193. ADL Enviro 400MMC 10889 10890 10891 10892 10893 10894. Dart/Enviro 200 36023 36024 36025 36026 36027. ADL E20D/Enviro 200MMC 37406 37407 37408 37409 37410 37411 37412 37413 37414 37415 37416 37417 37418 37419 37420 37421 37422 37423.

Enviro 200MMC 10.8m 26041 26042 26043 26044 26045 26046 26047 26048 26049. ADL Enviro 300 27558 27559 27560 27561 27562. Optare Solo SL 47312.

Reserve Fleet Trident 18084, Dart SLF 34629 34631 35259 35260, Optare Solo 47032 47036 47046.

Awaiting Disposal

Portsmouth 16527 16934 22850 22851 22852 22855 22857 22858 22862 34620 34633. Chichester 35126.



Buses reports Trident/Plaxton Y852 GCD now with Cambridge Bus & Coach and YT11 LPY Scania Omnilink is now with Caelloj, Pwllheli.

D-DAY 75.

The 75th anniversary of the D-Day landings in Normandy, France, was marked with a major event on Southsea Common.

Portsmouth City Council commissioned a special park and ride service linking the D-Day event with a special car park at King George V Playing Fields at Cosham. The contract for this service was awarded to Xelabus Limited, Eastleigh. At least the following members of their own fleet were used.

<i>Fleet No.</i>	<i>Registration</i>	<i>Note</i>
447	YX58 UNY	
547	Y15 XEL	
549	J16 XEL	
	YN19 ONV	Demonstrator on loan to Xelabus

These were supplemented at least by the following buses hired by Xelabus for the event.

<i>Operator Code</i>	<i>Fleet No.</i>	<i>Registration</i>	<i>Note</i>
BTL	205	SN17 WTZ	
CB	220	JF10 OXF	
CB	222	LF10 OXF	
COM	219	HF10 OXF	
RTL	1111	YN08 MMJ	
RTL	1113	YN08 MMO	
SDL	AV18	X18 SEA	Originally X103 HKY
SDL	454	SFZ 454	Originally Y658 NLO
SSL	10761	SN66 XYF	Stagecoach Gold 1 livery
SSL	19034	SN56 AWA	
SSL	19055	MX56 FSE	
SSL	19063	404 DCD	Cancer Research UK livery
SSL	19071	MX56 FTD	
STL	CM1	GB18 RML	
STL	TA1	V301 KGW	
TTL	214	CF10 OXF	

VICTORIOUS FESTIVAL 2019, PORTSMOUTH.

The annual Victorious Festival took place on Friday 23/8/19, Saturday 24/8/19 and Sunday 25/8/19 on Castle Field and

Southsea Common, with a campsite at Farlington Playing Fields. Portsmouth City Council commissioned Xelabus Ltd to operate a special service linking the car park at Lakeside 1000 and the campsite at Farlington with Clarence Pier, Southsea, for the Festival.

Friday 23/8/19

At least the following members of their own fleet were used.

<i>Fleet No.</i>	<i>Registration</i>	<i>Note</i>
441	SN60 CNV	
530	J12 XEL	
538	J80 BPC	
539	SK52 OHB	
542	SK52 OGW	
545	J18 XEL	
547	J12 XEL	
548	J17 XEL	
549	J19 XEL	
550	YN05 WFD	
551	H10 XEL	
552	L7 XEL	
553	J8 XEL	
554	N321 KES	
908	H9 XEL	Fleet Support Vehicle.

These were supplemented at least by the following bus hired by Xelabus for the event.

<i>Operator Code</i>	<i>Fleet No.</i>	<i>Registration</i>
STL	CM2	GB18 AEC

Saturday 24/8/19.

Regrettably, no reports available.

Sunday 25/8/19.

At least the following members of their own fleet were used.

<i>Fleet No.</i>	<i>Registration</i>
419	YR10 AZA
440	SN60 CNU
441	SN60 CNU
442	YX68 UNY
530	J12 XEL
538	J80 BPC

539	SK52 OHB
542	SK52 OGW
545	J18 XEL
547	J15 XEL
548	J17 XEL
549	J19 XEL
550	YN05 WFD
551	H10 YEL
552	L7 XEL
554	N321 KES

These were supplemented at least by the following bus hired by Xelabus for the event.

Operator Code	Fleet No.	Registration
SSL	19055	MX56 FSE

Christmas operations 2019

24th December, A Monday to Friday service operated on X6, X7, X15. A Saturday service X4, X9, X10 and X11. ASDA free bus at Fareham ran a Tuesday timetable. The X12 operate.

25th December – No services operated.

26th December - No services operated.

New Year 's Day - No services operated.

OPERATORS OF HIRED VEHICLES:

Operator Code	Title	Registered Office
BTL	Bournemouth Transport Ltd. T/A Yellow Buses.	Yeomans Way, Bournemouth, Dorset, BH8 0BQ.
CB	Carousel Buses Ltd.	Unit 2, Hughenden Avenue, High Wycombe, Buckinghamshire, HP13 5SG.
COM	The City of Oxford Motor Services Ltd.	Cowley House, Wallington Road, Cowley, Oxford, Oxfordshire, OX4 6GA.
RTL	Reading Transport Ltd.	Great Knollys Street, Reading, Berkshire, RG1 7HH.
SDL	Seaford & District Motor Services Ltd.	Broyle Place Farm, Laughton Road, Laughton, East Sussex, BN8 5SD.
SSL	Stagecoach (South) Ltd.	Bus Station, Southgate, Chichester, West Sussex, PO19 8DG.
STL	Southern Transit Bus Company Ltd.	The Old Shoreham Cement Works, Shoreham Rd., Upper Beeding, West Sussex, BN44 3TX.
TTL	Thames Travel Ltd.	Collett Road, Southmead Park, Didcot, Oxfordshire, OX11 7ET.

Information supplied by KEVIN KITCHER

PH1098723/124 From Lakeside, Western Road, Cosham To: Portsmouth, Isambard Brunel Road Via: P & R / Service 30 November 2019 only, every 10 mins.

Ex Bright & Hove at the Bluestar depot. © Barry T.

Can anybody assist with Bluestar fleet information or know of an 'insider' who might feed us information.





NEW VEHICLES.

67261-67284 Alexander Dennis E20D (11.8m)

Fleet No.	Registration	Delivered
67261	YX69 NPK	2/12/19
67262	YX69 NPN	3/12/19
67263	YX69 NPO	5/12/19
67264	YX69 NPP	4/12/19
67266	YX69 NPV	5/12/19
67267	YX69 NPY	4/12/19
67270	YX69 NRZ	-/12/19
67273	YX69 NSJ	-/12/19
67275	YX69 NSN	-/12/19
67276	YX69 NSO	-/12/19

These are the first of 24 new buses for Hilsea in a new two-tone blue livery for Star services 7 and 8. All except 67261 were delivered without branding which was applied at Hoeford soon after arrival. 67261 was delivered *with* branding and has been used for driver familiarisation duties since 15/12/19.

Posters have recently been placed in existing buses on Star services alerting passengers to the imminent appearance of new buses. The posters show an artist's impression of one of the new buses showing fleetnumber 67151, which is proper to YX66 WFJ of First Potteries Limited, Stoke-on-Trent, Staffordshire (67151).

Road Works in Hart Plain Avenue, Waterloooville.

Hart Plain Avenue was closed to traffic from 0930 to 1630 from Monday 21/10/19 to Friday 25/10/19 and from Monday 28/10/19 to Friday 1/11/19 for resurfacing. Bus services were affected as follows.
7 (PORTSMOUTH – WECOCK FARM) Diverted from Hambledon Road via Milton Road and Eagle Avenue to the bus terminus.
7 (WECOCK FARM – PORTSMOUTH) Diverted from bus terminus via Eagle Avenue and Milton Road to Hambledon Road.

Road Traffic Accident in Milton Road, Waterloooville.

A road traffic accident occurred at the junction of Milton Road with Hart Plain Avenue at 2030 on Monday 14/10/19. The junction was closed to northbound traffic from 2030 to 2200 that evening while the emergency services attended the scene. Bus services were affected as follows.

7 (PORTSMOUTH – WECOCK FARM) Diverted from Hambledon Road via Sunnymead Drive and Milton Road to Hart Plain Avenue.
7 (WECOCK FARM – PORTSMOUTH) Not affected.

KT1 SOUTHSEA (CLARENCE PIER) – SOUTHSEA (KINGS THEATRE)

New service for Kings Theatre patrons attending performances of the pantomime Aladdin from 14/12/19 to 22/12/19, from 26/12/19 to 31/12/19, and from 4/1/20 to 5/1/20 using double deck buses. Full details to follow.



First driver training buses in Empress Road depot.

© David Etheridge

Disposals at Wallington Commercials, Fort Wallington, Fareham, Hants.

From records held by Bob Gray, prepared by Keith Morton.

Reg	Chassis	Body	Type	Operator	Date
GRH203	Guy Arab	Roe	H56R	East Yorkshire	?
HD 8507	Leyland PD2	Leyland	H56R	Yorkshire Woolen	?
CFN 101	Leyland PS1	Park Royal	C32R	East Kent	?
RVN 627	Albion	?	C??F	?	?
HRU 845	Bristol KEA	ECW	L55R	Hants & Dorset	?
GLT 960	Leyland PD1	ECW	L55R	Hants & Dorset	?
GLT 958	Leyland PD1	ECW	L55R	Hants & Dorset	?
GLT 959	Leyland PD1	ECW	L55R	Hants & Dorset	?
FW 6870	Leyland	?	?	?	?
SOB 49	Daimler	?	?	?	?
MTM 904	Tilling Stevens	?	?	?	?
FXT 283	AEC Regent	LPTB	H R	London Transport	2/67
ERU 593	Bristol K5G	ECW	L55R	Hants & Dorset	?
FFM 540	Bristol K5G	ECW	L55R	Crosville	2/67
FFM 450	Bristol K5G	ECW	L55R	Crosville	2/67
GHO 596	Guy Arab	Reading	H54R	Provincial	2/67
FHO 604	AEC Regent	Reading	H54R	Provincial	2/67
FHO 605	AEC Regent	Park Royal	H54R	Provincial	2/67
CAA 700	AEC Regent	Park Royal	H54R	Provincial	2/67
EOR 30	Guy Arab	Weymann	H51R	Aldershot & District	2/67
KUO 10	Bedford OB	Duple	C29F	Aldershot & District	5/67
LYC 188	Bedford OB	Duple	C29F	Aldershot & District	5/67
HOT 810	Bedford OB	Duple	C29F	Aldershot & District	5/67
EUT 286	Maudsley	Gurney Nutting	C37F	?	5/67
MDD 689	Bedford	Plaxton	C35C	Meatyards Coaches, Portchester	6/67
GLT 988	Bristol K6A	ECW	L55R	Hants & Dorset	6/67
HLT 45	Bristol L	ECW	B35R	Hants & Dorset	6/67
EOR 31	Guy Arab	Weymann	L51R	Aldershot & District	6/67
GLT 997	Bristol L5G	ECW	B35R	Hants & Dorset	6/67
NBH 496	Dennis	Simmonds	C??C	?	6/67
LOU 49	Dennis Lancs	East Lancs	L56R	Aldershot & District	6/67
UHY 211	Daimler Freeline	Heaver	C??C	Monarch Coaches	8/67
KGJ 431	?	?	?	?	?
JT 9355	Bristol K5G	ECW	?	Aldershot & District	8/67
MPA 795	Foden	Duple	C33F	Newman Coaches	8/67
CHR 492	Bristol K	ECW	L52R	Wilts & Dorset	7/67
MBX 462	AEC Reliance	Duple	C41F	Worrells Coaches	7/67
FUT 635	Commer Avon	Plaxton	C33C	?	9/67
LWU 931	AEC Reliance	Yates	C39C	?	9/67
FWX 809	Bristol L6B	ECW	B31R	West Yorkshire	9/67
FV 6847	Leyland TS7	Duple	C33F	Standerwick	9/67
FJN 209	Leyland RT	Burlingham	C39C	?	10/67

Reg	Chassis	Body	Type	Operator	Date
ORU 263	Albion	Harrington	C35C	Charlies Cars	10/67
FOW 433	Guy Arab	Park Royal	H56R	Southampton Corporation	11/67
FOW 434	Guy Arab	Park Royal	H56R	Southampton Corporation	11/67
FTR 506	Guy Arab	Park Royal	H56R	Southampton Corporation	11/67
FTR 507	Guy Arab	Park Royal	H56R	Southampton Corporation	11/67
FTR 508	Guy Arab	Park Royal	H56R	Southampton Corporation	11/67
FTR 509	Guy Arab	Park Royal	H56R	Southampton Corporation	11/67
FTR 516	Guy Arab	Park Royal	H56R	Southampton Corporation	11/67
THR 547	Bedford OWB	Scottish Motor Traction	B??F	Chivers [Contractor]	11/67
RMR 792	Bedford OWB	Scottish Motor Traction	B??F	Chivers [Contractor]	11/67
RAM892	Bedford OWB	Scottish Motor Traction	B??F	Chivers [Contractor]	11/67
UMN 434	Bedford OWB	Scottish Motor Traction	B??F	Chivers [Contractor]	11/67
KKK 849	AEC Regal	Harrington	C32F	Maidstone & District	11/67
KKK 851	AEC Regal	Harrington	C32F	Maidstone & District	11/67
CHR 493	Bristol K5G	ECW	L52R	Wilts & Dorset	2/68
CHR 488	Bristol K5G	ECW	L52R	Wilts & Dorset	2/68
CHR 495	Bristol K5G	ECW	L52R	Wilts & Dorset	2/68
CHR 498	Bristol K5G	ECW	L52R	Wilts & Dorset	2/68
CWX 673	Bristol K5G	Roe	L55R	West Yorkshire	2/68
CWX 680	Bristol K5G	Roe	L55R	West Yorkshire	2/68
CWX 137	Bristol L6G	ECW	B35R	West Yorkshire	2/68
CWX 670	Bristol K5G	Roe	L55R	West Yorkshire	2/68
HRW 851	Bristol K6A	ECW	L55R	Hants & Dorset	2/68
HRW 852	Bristol K6A	ECW	L55R	Hants & Dorset	2/68
HLJ 24	Bristol K6A	ECW	L55R	Hants & Dorset	2/68
AJA 144	Bristol K6A	Willowbrook	L55R	North Western	2/68
JEL 244	Bristol K6A	ECW	L55R	Hants & Dorset	2/68
HRU 853	Bristol K6A	ECW	L55R	Hants & Dorset	2/68
MMB 852	Leyland PS1	Gurney Nutting	V33C	Bere Regis	2/68
CHR 490	Bristol K5G	ECW	L52R	Wilts & Dorset	2/68
CWX 674	Bristol K5G	Roe	L55R	West Yorkshire	2/68
BWY 992	Bristol K5G	ECW	L55R	West Yorkshire	2/68
FOW 438	Guy Arab	Park Royal	H56R	Southampton Corporation	3/68
FOW 439	Guy Arab	Park Royal	H56R	Southampton Corporation	3/68
FTR 510	Guy Arab	Park Royal	H56R	Southampton Corporation	3/68
FTR 512	Guy Arab	Park Royal	H56R	Southampton Corporation	3/68
FTR 513	Guy Arab	Park Royal	H56R	Southampton Corporation	3/68
FTR 515	Guy Arab	Park Royal	H56R	Southampton Corporation	3/68
FTR 518	Guy Arab	Park Royal	H56R	Southampton Corporation	3/68
FTR 519	Guy Arab	Park Royal	H56R	Southampton Corporation	3/68
FTR 520	Guy Arab	Park Royal	H56R	Southampton Corporation	3/68
FTR 521	Guy Arab	Park Royal	H56R	Southampton Corporation	3/68
FDW 42	Guy Arab	Park Royal	J56R	Newport Corporation	4/68
FDW 47	Guy Arab	Park Royal	J56R	Newport Corporation	4/68
FDW 842	Guy Arab	Park Royal	J56R	Newport Corporation	4/68

Reg	Chassis	Body	Type	Operator	Date
HOT 392	Guy Arab	Duple	H57R	Thames Valley	4/68
HOT 393	Guy Arab	Duple	H57R	Thames Valley	4/68
HOT 394	Guy Arab	Duple	H57R	Thames Valley	4/68
FMO 517	Guy Arab	Duple	H57R	Thames Valley	5/68
FMO 515	Guy Arab	Duple	H55R	Thames Valley	5/68
FMO 516	Guy Arab	Duple	H55R	Thames Valley	5/68
MXB 470	AEC Reliance	Duple	C41F	Faulkners	5/68
FJO 680	Dennis	Plaxton	C33F	?	6/68
CG 9606	AEC Regal	Reading	B33F	Provincial 23	10/68
CG 9613	AEC Regal	Reading	B34F	Provincial 28	10/68
CG 9610	AEC Regal	Reading	B35F	Provincial 25	10/68
CG 9608	AEC Regal	Reading	B34F	Provincial 29	10/68
ATD 698	AEC Regal	Reading	B31F	Provincial 15	10/68
JBK 668	Bedford SBO	Duple	C36F	Provincial 67	10/68
HDL 267	Bristol K	ECW	L55R	Southern Vectis	12/68
GHR 866	Bristol	ECW	B??R	?	2/69
GAE 493	Bristol	?	?	Showman's Bus	2/69
ORR 337	Leyland Tiger Cub	Saunders Roe	B44F	William Press Ex East Midland	3/69
XTC 25	Bedford	Burlingham	C36F	Hawkings & Timpsons Ropemakers	3/69
HUF 934	Leyland PS1	Duple	C32F	Collings Ex Southdown	3/69
PNW 479	AEC Reliance	Duple	C41F	Southgate Coaches	3/69
NAM 953	Bedford	Plaxton	C41F	Brownings Box Wilts	3/69
SVT 855	Leyland Tiger Cub	Weymann	B44F	W Press [Contractor] Ex Potteries	4/69
RYO 473	AEC Reliance	Weymann	C??F	W Press [Contractor] EX Timpson	4/69
HYR 1	Bedford OB	Duple	C27F	?	4/69
CRC 753	Bedford SB	Duple	C32F	Castonia Surrey	4/69
CG 9611	AEC Reliance	Reading	B35F	Provincial 26	4/69
FHO 609	AEC Regent	Reading	H56R	Provincial 10	4/69
OCG 444	AEC Regent	Reading	C35F	Provincial 68	4/69
PCG 436	AEC Regent	Reading	C35F	Provincial 69	4/69
EOR 876	Guy Arab	Park Royal	Open Top 56 Str	Provincial 18	4/69
ECG 622	Bristol K	Park Royal	Open Top 56 Str	Provincial 54	4/69
EHO 868	Guy Arab	Park Royal	Open Top 56 Str	Provincial 58	4/69
FCH 10	Leyland Tiger Cub	SARO	B??F	William Press Ex Trent	5/69
HUH 17	Leyland Tiger Cub	MCW	B??F	William Press Ex Western Welsh	5/69
NUA 785	AEC Regal	Plaxton	C35C	Shurrocks Brill Bucks	6/69
JEL 263	Bristol K	ECW	L55R	Hants & Dorset	7/69
FDL 987	Bristol K	ECW	L55R	Southern Vectis	7/69
GLJ 998	Bristol L	ECW	B35R	Hants & Dorset	7/69
GDL 711	Bristol K	ECW	L55R	Southern Vectis	7/69
GDL 712	Bristol K	ECW	L55R	Southern Vectis	7/69
EHT 422	Maudsley	Gurney Nutting	C??C	Reed & Mallock	7/69
KYE 833	Dennis Lancet	Plaxton	C30F	St Johns College Southsea	7/69
GLT 974	Bristol K	ECW	L55R	Hants & Dorset	7/69
HCG 41	Guy Arab	Park Royal	H56R	Provincial 6	8/69

Reg	Chassis	Body	Type	Operator	Date
GOU 449	AEC Reliance	Reading	B35F	Provincial 66	8/69
MPO 94D	Bedford	Mulliner	B??F	A-G Spares Sussex EX Government	8/69
MWL 971	AEC Regent	Metro Camel Weymann	H??R	?	8/69
FFN 557	Dennis	?	B29F	Marco Ex East Kent	8/69
FFN 565	Dennis	?	B29F	Marco Ex East Kent	8/69
JEL 262	Bristol K	Metro Camel Weymann	L55R	Hants & Dorset	8/69
BOR 766	AEC Regent	Reading	H56R	Provincial 34	1/70
HLW 186	AEC Regent	?	H??R	Aldermaston Ex LTE	1/70
MYB 557	Dennis	Plaxton	C30F	St Johns College Ex White Heather	4/70
DMO 664	Bristol LL	Metro Camel Weymann	B??F	Thames Valley	4/70
JHO 129	Guy Arab	Park Royal	H56R	Provincial 4	6/70
HOR 462	Guy Arab	Park Royal	H56R	Provincial 5	6/70
FCR 452	Guy Arab	Park Royal	H56R	Southampton corporation 11	6/70
FCR 441	Guy Arab	Park Royal	H56R	Southampton Corporation 16	6/70
EHO 967	Guy Arab	Reading	H56R	Provincial 60	6/70
JEL 253	Bristol K	ECW	L55R	Esso Ex Hants & Dorset	6/70
VOR 339	Bedford	Burlingham	C41F	John Hunt [Builder] EX Hutfield	8/70
LCD 209	Leyland Royal Tiger	Duple	C26C	Collins [Builder] Ex Southdown	8/70
HRU 855	Bristol K	ECW	L55R	Hants & Dorset	9/70
REL 709	Bristol K	ECW	L55R	Hants & Dorset	9/70
EHO 965	Guy Deutz	Reading	H56R	Provincial 59	9/70
HWO 335	Guy Arab	Duple	L53R	Provincial 13	9/70
WDG 976	Guy Arab	Brislington Body Works	L55R	Provincial 78	9/70
EDG 975	Guy Arab	Metro Camel Weymann	L55R	Provincial 77	9/70
CG 9612	AEC Regal	Reading	B35F	Provincial 27	9/70
HCG 42	Guy Arab	Park Royal	H56R	Provincial 7	9/70
MRH 272	Leyland Royal Tiger	Burlingham	C??C	?	8/70
FBL 28	Bristol K	ECW	L55R	Thames Valley	9/70
REL 206	Bristol K	ECW	L55R	Hants & Dorset	9/70
SNN 71	Bristol LS	ECW	B43F	Provincial EX Mansfield & District	9/70
MUK 711	Leyland Royal Tiger	Willowbrook	C??C	?	9/70
KYY 512	AEC Regent	MCW	?	London Transport N° RLH 12	12/70
SYF 669	Bedford SB	Duple	C38C	White Heather	12/70
DJO 344	Leyland PS1	?	C??F	Bere Regis & District	?
HXJ 567	AEC Regal	Bellhouse/??	C35F	Bere Regis & District	?
LOL 132	Dennis Lance	East Lancs	L56R	Aldershot & District	?
EPM 8	Bristol K56	ECW	H56R	Brighton Hove & District	?
GLT 996	Bristol L56	ECW	B35R	Hants & Dorset	?
FDL 984	Bristol K5G	ECW	L55R	Southern Vectis	?
GLT 968	Bristol K5G	ECW	L55R	Hants & Dorset	?
GLJ 973	Bristol K5G	ECW	L55R	Hants & Dorset	?
EDL656	Bristol K5G	ECW	L55R	Southern Vectis	?
FDL 295	Bristol K5G	ECW	L55R	Southern Vectis	?
EDL 658	Bristol K5G	ECW	L55R	Southern Vectis	?
GLJ 970	Bristol K6A	ECW	L55R	Hants & Dorset	?

Reg	Chassis	Body	Type	Operator	Date
GLJ 993	Bristol K6A	ECW	L55R	Hants & Dorset	?
HLJ 28	Bristol K6A	ECW	L55R	Hants & Dorset	?
GLJ 991	Bristol K6A	ECW	L55R	Hants & Dorset	?
HLJ 16	Bristol K6A	ECW	L55R	Hants & Dorset	?
HLJ 18	Bristol K6A	ECW	L55R	Hants & Dorset	?
HLJ 20	Bristol K6A	ECW	L55R	Hants & Dorset	?
HLJ 34	Bristol K6A	ECW	L55R	Hants & Dorset	?
HLW 244	AEC Regent	Park Royal	H56R	Ex London Transport	?
HLW 245	AEC Regent	Park Royal	H56R	Ex London Transport	?
TRF 693	Leyland PS2/3	Metalcraft	C35F	Ex Potteries Motor Traction	?
HY 8251	Bristol JO5G	Brislington Body Works	?	Bristol Tramways	?
DMO 328	?	?	?	Newbury & District	?
WG 7480	?	?	?	Alexander	?
EOT 28	Guy Arab	East Lancs	L56R	Aldershot & District	?
EOT 29	Guy Arab	East Lancs	L56R	Aldershot & District	?
JKM 912	Bristol K6A	Saunders	H56R	Maidstone & District	?
DDV 1	Bristol L5G	Beadle	B36R	Western National	?
DDV 39	Bristol L5G	Beadle	B36R	Western National	?
DJF 325	AEC Regent	?	?	Leicester Corporation	?
DJF 326	AEC Regent	?	?	Leicester Corporation	?
CKG 520	Guy Arab	?	?	Cardiff Corporation	?
EWN 350	AEC Regent	?	?	South Wales Transport	?



Three photographs from 1969.

© Bob Gray

Robert Martin in the 1980s.

